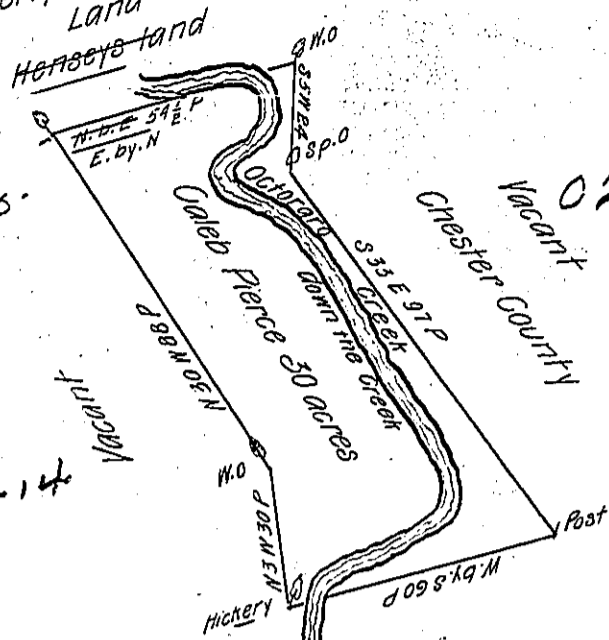


D-65-168  
formerly Philip Howells  
Land

C212-5

C212-14



Caleb Pierces Land  
Pat - A-5-133

By Virtue of a Warrant from the Hon<sup>ble</sup> Proprietaries bearing date the tenth day Jan<sup>ry</sup> Anno D/1737 I have Surveyd and Laid out unto Caleb Pierce in the township of Sadsbury. Thirty acres of Land, part in ye County of Chester and part in the County of Lancaster. Beginning at a White Oak Stand<sup>g</sup> in the line of formerly of Philip Howells Henseys land thence South five degrees westerly twenty four Pches to a Spanish Oak, thence South thirty three degrees Easterly Ninety seven Pches to a Post, thence West by South Sixty Pches to a Hickery North three degrees westerly thirty perches to a White Oak thence North thirty degrees westerly eighty eight perches to a White Oak in S<sup>d</sup> Howells Henseys line then by the S<sup>d</sup> line North by East fifty four perches and a half to the Place of Beginning

Surveyd January 13<sup>th</sup> /1737. P<sup>me</sup> Zach Butcher Dp<sup>t</sup>

To Benj<sup>o</sup> Eastburn Survey<sup>r</sup> Gen<sup>l</sup>

N.B. Hensey purchased a tract of land of Th: Downing adjoining Andrew Moores 200<sup>o</sup> formerly Surveyed to James Hammer. 200<sup>o</sup> was confirmed by Pat<sup>s</sup> to Andrew Moore & another tract of — acres to Tho<sup>s</sup> Downing

No Return of this is to be made till Samuel Jack be heard he complaining of this Survey

IN TESTIMONY that the above is a copy of the original remaining on file in the Department of Internal Affairs of Pennsylvania, made conformably to an Act of Assembly approved the 16th day of February, 1833, I have hereunto set my Hand and caused the Seal of said Department to be affixed at Harrisburg, this twenty first day of March 1906

*Loacis Brown*  
Secretary of Internal Affairs.